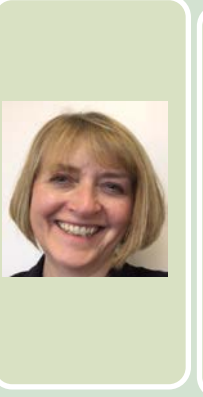
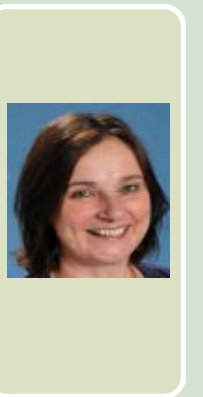
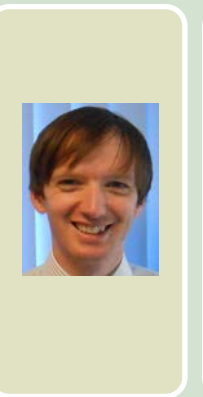
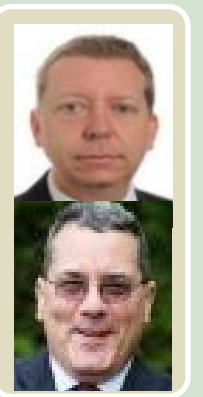
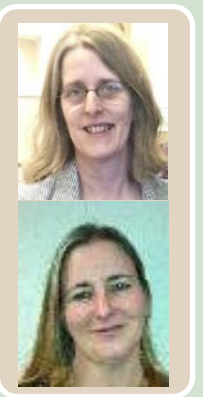
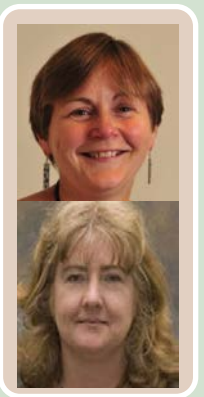
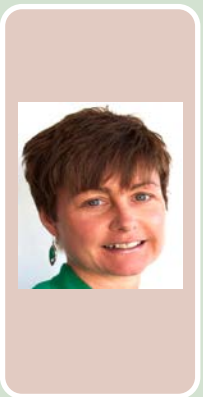
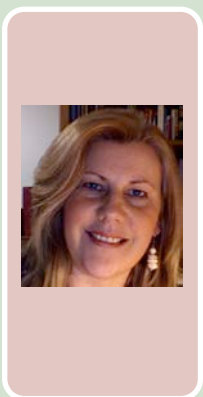
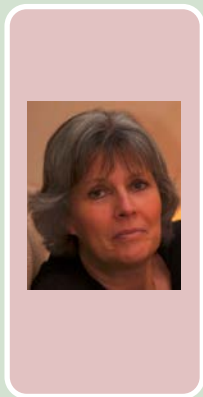


SSPB Membership 2016-2017



Independent Chair

Rebecca Matthews

Diocese of Oxford

Fiona Craig
Deputy Director of Education (School Effectiveness),
Oxfordshire Diocesan Board of Education

Further Education

Jenny Craig
Assistant Principal (Quality & Performance),
Abingdon & Witney College

Higher Education

Dr Katharine Burn
Associate Professor of Education,
Oxford University

Dr Mary Wild
Head of School of Education,
Oxford Brookes University

OCC – LA

Chris Malone
Strategic Lead,
Education Quality

Alison Wallis
Performance and Information Manager –
provides data to Board

OGA

Stan Terry
Governor

OTSA

Adam Arnell
Director of OTSA

Andy Hamilton
OTSA Lead for S2SS
(Head Bartholomew School)

Schools - Special

John Riches
Headteacher,
Bardwell School

Schools - Primary

Liz Burton
Headteacher,
St Mary and John C of E
Primary School

Schools - Secondary

Katherine Ryan
Headteacher,
Matthew Arnold School

Oxford City and Oxfordshire District Councils

Val Johnson
Head of Community Services